

PRODUCT INFORMATION PACKET

marathon®
Motors

Model No: 056C34WD5301
Catalog No: N340
1/2,3600,56C,TEFC,1/60/115/208-230
Washdown Duty



Regal and Marathon are trademarks of Regal Beloit Corporation or one of its affiliated companies.
©2018 Regal Beloit Corporation, All Rights Reserved. MC017097E

REGAL



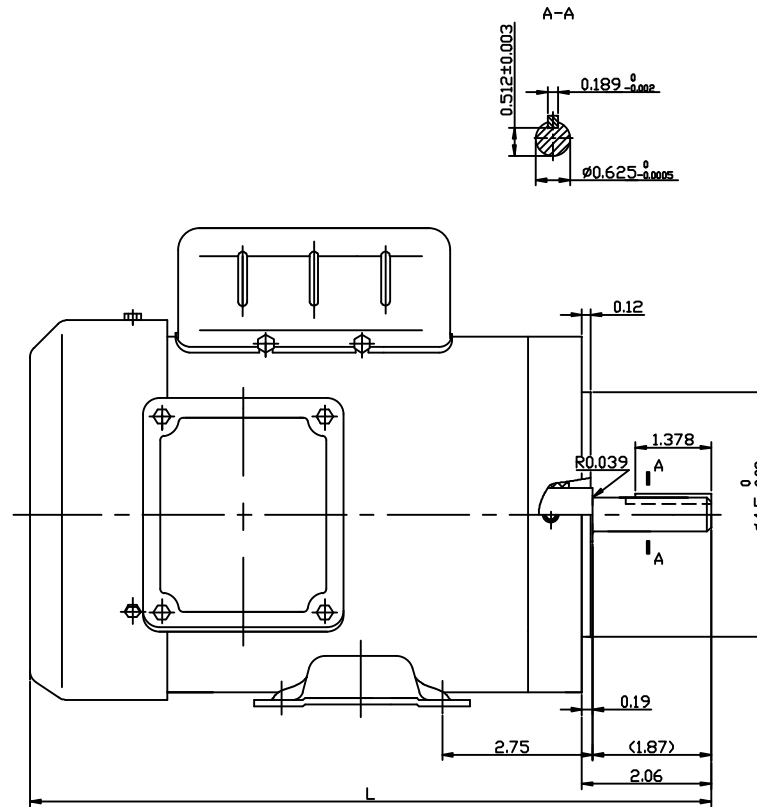
Nameplate Specifications

Output HP	0.50 Hp	Output KW	0.37 kW
Frequency	60 Hz	Voltage	115/230 V
Current	7.4/3.7 A	Speed	3450 rpm
Service Factor	1.15	Phase	1
Efficiency	62 %	Duty	Continuous
Insulation Class	F	Design Code	N
KVA Code	K	Frame	56C
Enclosure	Totally Enclosed Fan Cooled	Overload Protector	No
Ambient Temperature	40 °C	Drive End Bearing Size	6205
Opp Drive End Bearing Size	6203	UL	Recognized
CSA	Y	CE	Y
IP Code	55		

Technical Specifications

Electrical Type	Capacitor Start Induction Run	Starting Method	Across The Line
Poles	2	Rotation	Selective Counterclockwise
Mounting	Rigid base	Motor Orientation	Horizontal
Drive End Bearing	Ball	Opp Drive End Bearing	Ball
Frame Material	Stainless Steel	Shaft Type	T
Overall Length	11.1 in	Shaft Diameter	0.625 in
Shaft Extension	2.06 in	Assembly/Box Mounting	F1 Only
Outline Drawing	16999700	Connection Diagram	005005.01

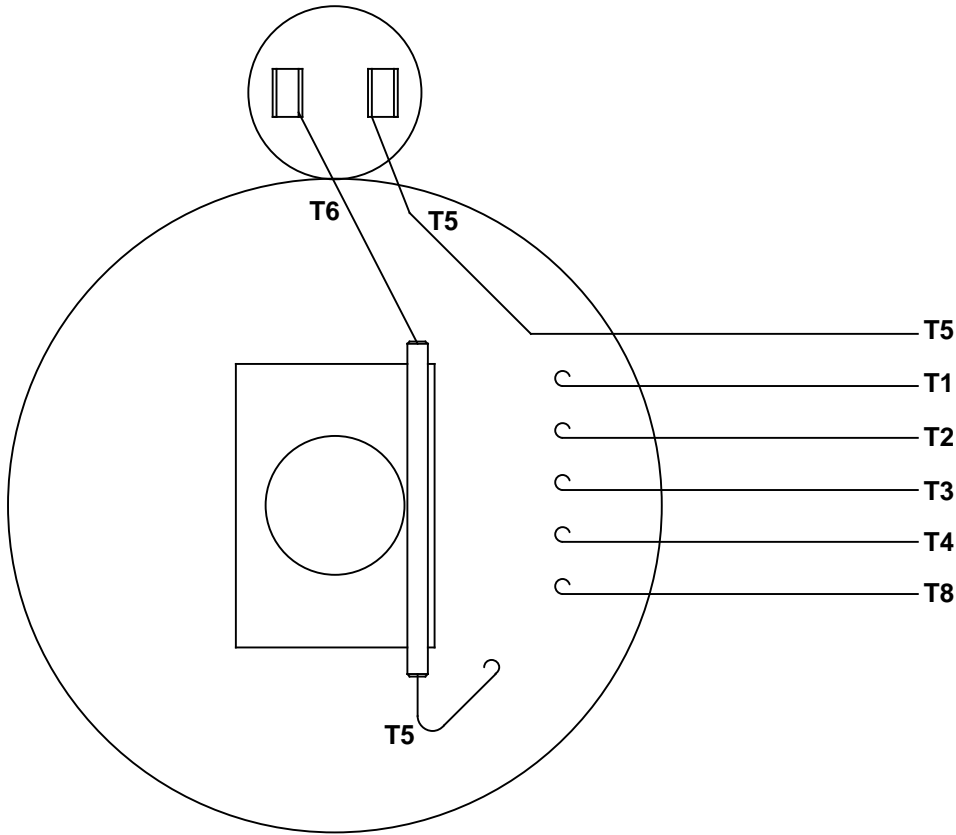
This is an uncontrolled document once printed or downloaded and is subject to change without notice. Date Created: 07/02/2018



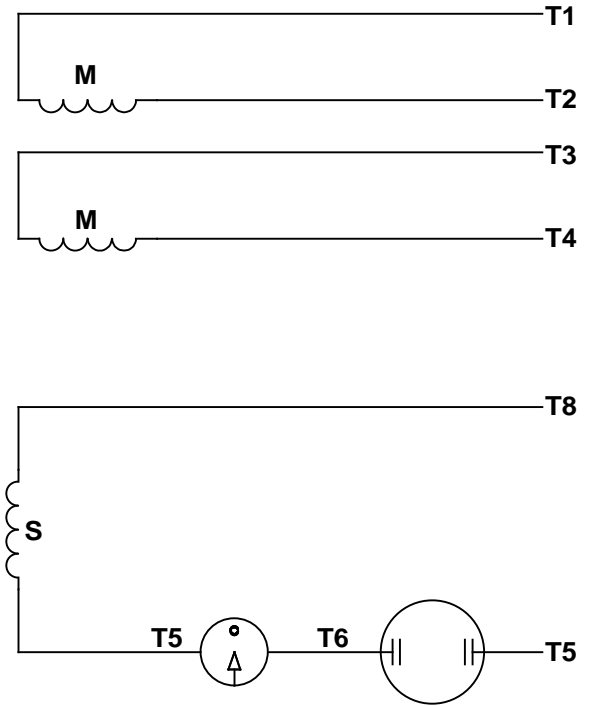
LSC NUMBER	CATA. NO.	HP	L	Q	VOLT	Hz	POLE	FRAME	ENCLOSURE
N/A	191475.00	1/2	11.1	8.46	115/230	60	4P	56C	TEFC
	191477.00	3/4	11.73	8.86					
	191479.00	1	12.24	9.09					

						TOLERANCES UNLESS OTHERWISE SPECIFIED			191475,191477,191479 OUTLINE						
						DEC.	INCHES	METRIC							
						.X	±.1	±25	DRAWN	TITLE					
						.XX	±.03	±76	APPR.						
						.XXX	±.005	±0.127	R.F.P.	MAT'L.					
ND.	REVISION			BY & DATE	CHK'D.	.XXXX	±.0005	±0.127	SCALE						
THIS DRAWING IN DESIGN AND DETAIL IS OUR PROPERTY AND MUST NOT BE USED EXCEPT IN CONNECTION WITH OUR WORK. ALL RIGHTS OF DESIGN AND INVENTION ARE RESERVED. THIS IS AN ELECTRONICALLY GENERATED DOCUMENT - DO NOT SCALE THIS PRINT									FRACTIONS	±1/84	REF.	FINISH	10.09.2012	REV.	DRAWING NO.
									ANGLES	±1/2"	FMF				

VIEW FROM OUTSIDE OF MOTOR AT SWITCH END.


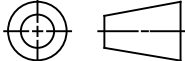


LINE LEADS



RBC PROPRIETARY AND CONFIDENTIAL INFORMATION
This document is the property of REGAL BELOIT CORPORATION ("RBC") including its subsidiaries and divisions and contains proprietary information of RBC. This document is loaned on the express condition that neither it nor the information contained therein shall be disclosed to others without the express written consent of RBC, and that the information shall be used by the recipient only as approved expressly by RBC. This document shall be returned to RBC upon its request. This document may be subject to certain restrictions under U.S. export control laws and regulations.

	ROTATION FACING LEAD END	L1	L2	JOIN
HIGH VOLT	C.C.W.	T1	T4, T5	T2, T3, T8
	C.W.	T1	T4, T8	T2, T3, T5
LOW VOLT	C.C.W.	T1, T3, T8	T2, T4, T5	-----
	C.W.	T1, T3, T5	T2, T4, T8	-----

--	REDRAWN IN SOLIDWORKS	VJB 02/16/11		TOLERANCES UNLESS SPECIFIED			ELECTRIC MOTORS GEARMOTORS AND DRIVES	DRAWN ADH 08/06/73		
27	UPDATED TO CURRENT STANDARDS	DBT 05/27/97		DEC	INCHES			CHK		
26	ADDED PAGE 32 (114787) & PAGE 33 (114788)	KAZ 12/20/95	PG	.X	±.1	TITLE EXTERNAL WIRING DIAGRAM TYPE "C" W/O PROTECTOR		APPR JCW 03/09/79		
25	ADDED PAGE 31	KAZ 04/19/95	DL	.XX	±.01			SCALE 1:1		
24	ADDED PAGES 29 & 30	KMM 03/30/95	DL	.XXX	±.005	MAT'L DECAL - 004012		REF FIG 2-23 C4A		
23	ADDED PAGE 28	KMM 01/27/95		.XXXX	±.0005			FMF MGI-2.4B		
NO	REVISION	BY & DATE	CHK	ANG	±1/2°	FINISH		PAGE OF		
<div>THIRD ANGLE PROJECTION</div> 			RFP		PREV		SIZE A	DRAWING NO 005005-01		REV --
			NETWORK FILE NAME 00500501							

CERTIFICATION DATA SHEET

Model#: 56C34WD5301 A **WINDING#:** QC6327 FR 3
CONN. DIAGRAM: 005005.01 **ASSEMBLY:** F1 ONLY
OUTLINE: 16999700

TYPICAL MOTOR PERFORMANCE DATA

HP	KW	SYNC. RPM	F.L. RPM	FRAME	ENCLOSURE	KVA CODE	DESIGN
1/2	.37	3600	3450	56C	TEFC	K	N

PH	Hz	VOLTS	FL AMPS	START TYPE	DUTY	INSL	S.F	AMB°C	ELEVATION
1	60	115/230	7.4/3.7	ACROSS THE LINE	CONTINUOUS	F5	1.15	40	3300

FULL LOAD EFF: 62	3/4 LOAD EFF: -	1/2 LOAD EFF: -	GTD. EFF	ELEC. TYPE	NO LOAD AMPS
FULL LOAD PF: 71.1	3/4 LOAD PF: -	1/2 LOAD PF: -	0	CAP START IND RUN	/

F.L. TORQUE	LOCKED ROTOR AMPS	L.R. TORQUE	B.D. TORQUE	F.L. RISE°C
- LB-FT	/	- LB-FT -	- LB-FT -	0

SOUND PRESSURE @ 3 FT.	SOUND POWER	ROTOR WK^2	MAX. WK^2	SAFE STALL TIME	STARTS /HOUR	APPROX. MOTOR WGT
- dBA	- dBA	0.058 LB-FT^2	- LB-FT^2	10 SEC.	-	0 LBS.

*** SUPPLEMENTAL INFORMATION ***

DE BRACKET TYPE	ODE BRACKET TYPE	MOUNT TYPE	ORIENTATION	SEVERE DUTY	HAZARDOUS LOCATION	DRIP COVER	SCREENS	PAINT
C-FACE	STANDARD	RIGID	HORIZONTAL	FALSE	NONE	FALSE	NONE	NO PAINT

BEARINGS		GREASE	SHAFT TYPE	SPECIAL DE	SPECIAL ODE	SHAFT MATERIAL	FRAME MATERIAL
DE	OPE						
BALL	BALL	POLYREX EM	T	NONE	NONE	AISI 1045 (C-240)	STAINLESS STEEL
6205	6203						

THERMO-PROTECTORS				THERMISTORS	CONTROL	SPACE /n HEATERS
THERMOSTATS	PROTECTORS	WDG RTDs	BRG RTDs			
NONE	NOT	NONE	NONE	NONE	FALSE	NONE VOLTS

If Inverter equals NONE, contact factory for further information

*
N
O
T
E
S
*

INVERTER TORQUE: NONE
INV. HP SPEED RANGE: NONE
ENCODER: NONE
NONE NONE
NONE NONE PPR
BRAKE: NONE NONE
NONE P/N NONE
NONE NONE
NONE FT-LB NONE V NONE Hz

DATE: 06/28/2017 12:48:15 AM
 FORM 3531 REV.3 02/07/99
 ** Subject to change without notice.